



COMPANY PROFILE

"Architecture is the integration of art, technology and the environment, creating functional space in an aesthetic manner. Our approach is the consideration for all aspects of context, community, culture & economics; to be a product of its time and place in society. To have relevance and contribute to the users and community today and tomorrow".

Mark Hitchcock
Director



PHILOSOPHY

Collaborative design of Sustainable Spaces

Our mission is to create spaces that captivate, enrich and endure. We are guided by a commitment to design excellence and transparent communication, ensuring a seamless journey from concept to project delivery. Our team combines extensive expertise in sustainability and a commitment to research which drives our design process. Our culture is about understanding and we prioritize collaboration among consultants, clients, specialist designers, and stakeholders to ensure a cohesive outcome.

Our approach focuses on the synthesis of context, functionality, and sustainability. At BHI we value the long-term life and performance of our projects, balancing the requirements of the site with the needs of the users. We acknowledge every brief is unique and embrace a distinct vision and design philosophy for each project, delivering inventive and efficient solutions.





PROJECT DIVERSITY & EXPERIENCE

Research, analyse + identify issues + innovate solutions

With extensive experience across a broad spectrum of project scales and types, our diverse portfolio demonstrates our competence in a variety of project categories, including residential, commercial, industrial, and public undertakings.

We approach our work with integrity and a commitment to clear communication. We work diligently to resolve complexities and provide solutions that align with our clients' aspirations, aiming to balance the needs of our stakeholders, with environmental and planning considerations. We are thorough in our research to drive quality in our design.

The ongoing demand for diverse project types has cultivated a design approach that thrives on employing innovative solutions to enhance project performance. Project priorities are tracked throughout all stages of project delivery with design management systems ensuring the delivery of projects that adhere to budget and programmed parameters.



PROJECT OVERVIEW

Residential

BHI architects have a wealth of experience in residential architecture, spanning a wide range of scales and settings. Our portfolio includes projects ranging from urban homes in city centres to rural dwellings. In every case, our approach is rooted in a deep understanding of our clients' unique requirements and preferences, carefully balanced with the site's context and surroundings.



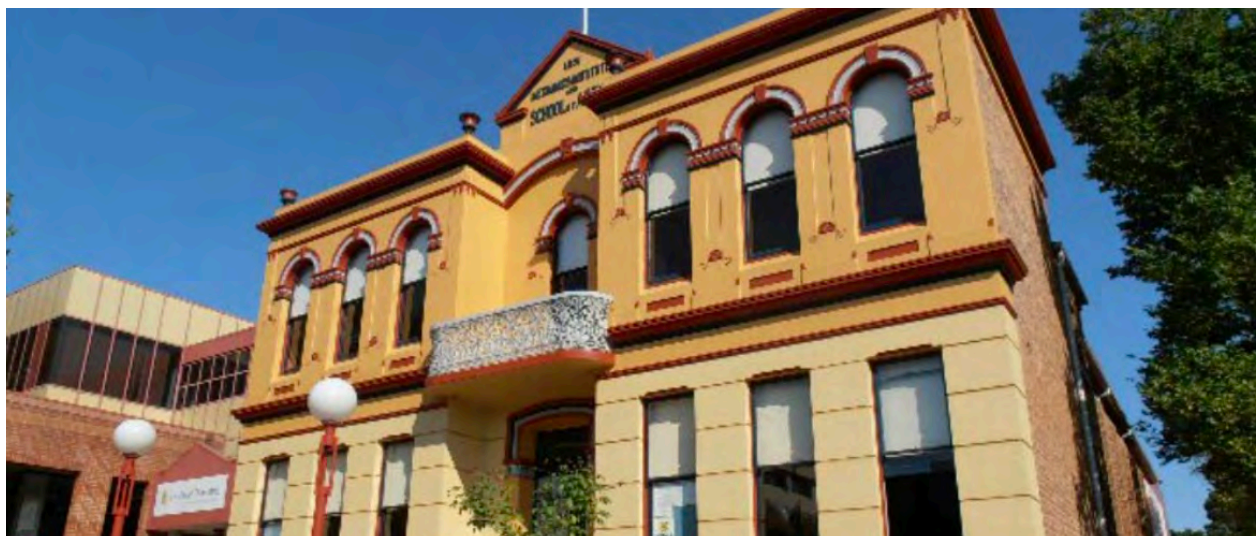
Commercial

Our extensive commercial portfolio showcases our versatility and expertise in diverse projects. From designing car dealerships that align seamlessly with corporate identities to conceiving large-scale mixed-use developments, we bring a keen eye for detail to every endeavour. At the heart of our approach lies a commitment to comprehending the project's lifespan and ensuring its optimal functionality, resulting in vibrant and dynamic commercial spaces.



Interior Design

Our approach to interior design is centered around an understanding of the users of the space. Whether our task is seamlessly extending the architectural brief or re-imagining the potential of an existing structure, we excel in creating spaces that enhance the experience for occupants. Our experience spans both residential and commercial projects and we continually pursue innovative design solutions to meet each space's unique requirements.



Heritage

At BHI Architects, we deeply value local history. Our proficiency in architecture and planning enables us to provide practical solutions for intricate heritage projects. In our approach, we aim to both preserve and elevate the intrinsic value of the heritage item. We offer consultation on heritage matters and excel in designing projects that carefully incorporate a building's unique history.



Industrial

In our industrial projects, we are dedicated to maximizing the inherent potential of each site while prioritising functionality. We work closely with stakeholders and clients to gain a comprehensive understanding of the project's unique requirements and objectives. Through open and ongoing communication, we ensure that every aspect of the brief is accurately documented. This methodological approach enables us to navigate the entire project life cycle seamlessly, from initial conception to successful completion.



Public

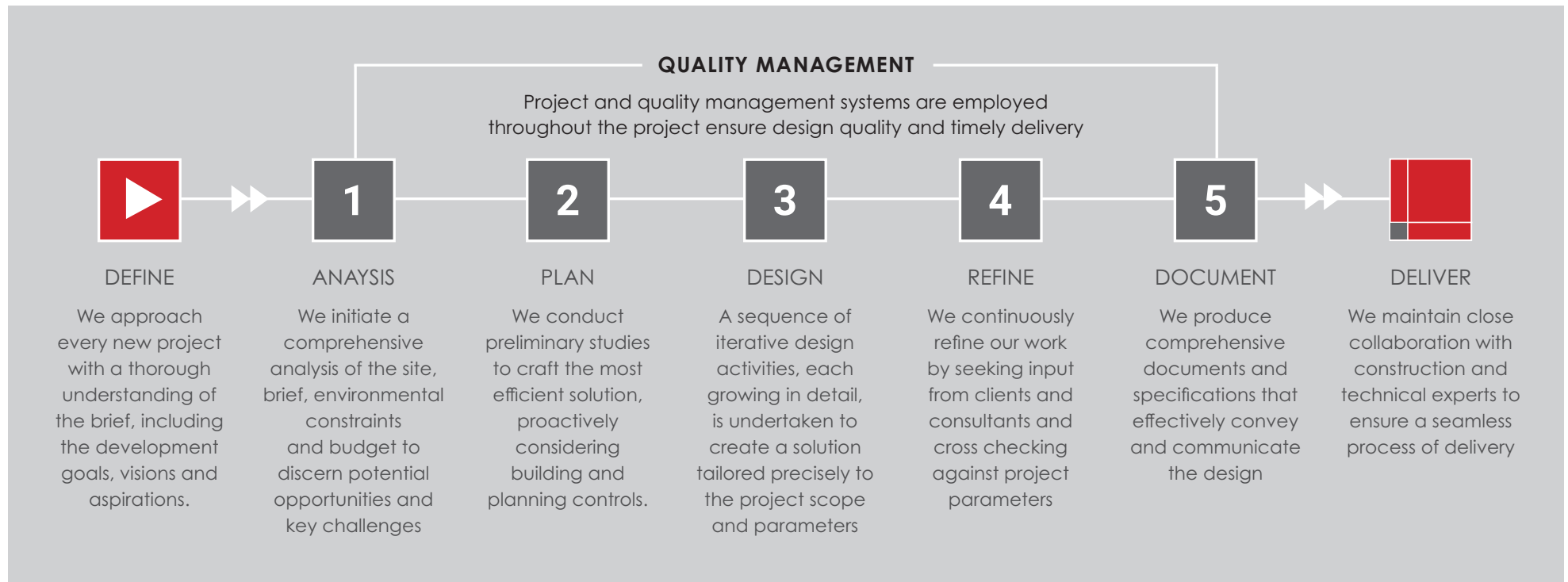
With a deep understanding of the local area, we consistently deliver effective and contextually harmonious solutions. Our goal is to craft public spaces that are not only functional but also vibrant and active, enriching the communities they serve. Whether it's through designing community centres or other public amenities, we strive to create environments that enhance the well-being and quality of life for residents and visitors alike.

METHODOLOGY

**Research & Analyse +
Identify Issues +
Innovate Solutions**

We approach our work with integrity and a commitment to clear communication. We work diligently to resolve complexities and provide solutions that align with our clients' aspirations, aiming to balance the needs of our stakeholders, with environmental and planning considerations. We are thorough in our research to drive quality in our design.

The ongoing demand for diverse project types has cultivated a design approach that thrives on employing innovative solutions to enhance project performance. Project priorities are tracked throughout all stages of project delivery with design management systems ensuring the delivery of projects that adhere to budget and programmed parameters.





TEAMS

BHI Architects is led by Director Mark Hitchcock, a registered Architect with over 40 years of professional experience. Mark specialises in urban design, sustainability, and heritage, having played a pivotal role in numerous distinctive projects. Mark works with our team leaders to guarantee a consistent level of service, a dedicated team, and the allocation of necessary resources to serve our clients across the Sydney, Kiama, and Sunshine Coast offices. Our extensive experience and involvement in projects of varying scales underscore BHI Architects' broad spectrum of offerings in architectural, interior design, urban design, and master planning.

COMPANY STRUCTURE

Our studios operate collaboratively with teams in Rosebery, Kiama, and the Sunshine Coast. Through our collective expertise, our teams contribute their knowledge at key stages of the design process, fostering an environment where individual expertise enriches the work of others. Our open-plan studios facilitate the sharing of ideas and projects among colleagues and offices.



40+ years experience servicing Sydney, Illawarra and the South Coast

19
80

Residence - Upper Kangaroo Valley
Residence - Meroo Meadow
Sundance Residence Wattamolla
Goodnight Island Resort - Shoalhaven
Berry Heritage Precinct Study
Social Housing - Nowra (DOH)
Rose Mumbler Village - North Nowra
Residence - Jaspers Brush
Residence - Foxground
Dune House Culburra Beach
Shellharbour Village Amenity & Shelter
Murrumbidgee Child Care Centre - Blacktown
Tory Hotel Restoration - Kiama
Toyota Showroom - Blacktown
Motor Vehicle Facility - Kirrawee
Foxground Valley Residence
Berry Showground Pavilion



19
90

Industrial Units - Kirrawee
Peakhurst Business Park
Pambulong Forest Housing Estate
Masonic Village - Berry
New Nowra Post Office
Oak Flats Neighbourhood Centre
Myimbar Community Park - Shellharbour
Murrumbidgee Redfern Public School
Restoration Nowra School of Arts
Nowra Showground Pavilion
Restoration & Hall St Lukes Church - Berry
Innovation Campus - Wollongong
KMC Blowhole Point Tourist Cabins
Albion Park Community Centre
Peakhurst Industrial Centre
BHI Office - Wollongong
Social Housing - Huskisson
Gerrigong Public School
WCC - Council Building Fitout
Berry Mountain Residence
Moonee Beach Housing Development
Ridge Sports Clubhouse - Lucas Heights
Shell Cove Golf Club
Boarding House - Kiama
Tullimbar Village
Marina Development Ningbo



20
00

Lake Conjola Cabins
Residence - Gerroa
Residence - Taren Point
Shanghai American School Campus
KMC Black Beach Amenities
Law Court fitout - Sydney
Mixed Use - Gerrigong
Northbridge Cliff House
Campbell St Apartments Wollongong
Residential Towers - Jeddah
Residence - Jamberoo
Sands Mixed Use Apartments - Towradgi
Residential Mixed Use - Shellharbour
Apartments - Huskisson
Residence - Northbridge
Corrimal Uniting Church
Industrial Units - South Hurstville
Cultural Village Hotel - Dubai
Jane Ardler Medical Centre - Nowra
Kiama Railway Station Upgrade
Suttons Audi - Rosebery
Watersleigh Anglican Youth Works
Latitude Apartments - Wollongong
Yeppoon Apartments
Australia Pavilion- World Expo Shanghai
IPAC Interior Wollongong



20
10

Cascades Development - Dural
Senior Living - Batemans Bay
Senior Living Shortland Waters
Orchard Quarter Mixed use Lisarow
Mixed Use - Corrimal
Soloman Island Embassy - Canberra
Mudgee House
Cancer Care Centre SGH
Mixed use Apartments - Strathfield
SCC Warilla Community Centre
St Johns Library - Dapto
Eco City - Changxing
Life City Health Centre - Wollongong
'Old Street' Heritage Retail Development
Kiama Performing Arts Centre
Coogee Boys Prep School
WCC Thirroul Bathers Pavilion
Residence - Falls Creek
Wilderness Resort - Utah
Lake Conjola Resort
Lighthouse Mixed Use - Wollongong
SoHo Apartments - Xuecheng
Parma Residence
Murring Cultural Centre - Falls Creek
Forest City Park - Zaozhuang
Office Building Wollongong



20
20

Kiama Heights Residence
Cultural Centre - Jervis Bay
Berry Town Residence
NAC - TAS School Facility
Suttons Ford + Service - Homebush
Lilli Pili House
'Providence' Mixed Use Rouse Hill
Jane Ardler Centre - Nowra
Gilbert & Roach Truck Facility
Suttons Chullora
McIntosh Conjola Park
Suttons Arncliffe
Social Housing Corrimal
Limestone Estate Industrial - Box Hill
Crooked River Estate
Buraneer Residence
Mixed Use Austral
Jamberoo Valley Residence



Over Four Decades of Multiple Awards

19
80

1991

Nowra Mechanics Institute and School of Arts – Commendation Dulux Colour Awards

Dominelli Volvo Dealership – Annual Civic Design Award Sutherland Shire Council

Group Seven Leagues Club – Building Achievement Award Kiama Municipal Council

1992

Terralong House Professional Suites – New Development Award Kiama Tourism Service Award

1993

Shoalhaven Memorial Lawn Cemetery and Crematorium – Engineering Excellence Award Institute of Municipal Engineering Australia, NSW Division

1994

Webster Beach House - CSR Cladding Design Award

1997

Webster Beach House - Shoalhaven Building Awards

1998

Postman's Tavern – Shoalhaven Building Awards Adaptive Re-use of Heritage Building

South Coast Medical Centre – Winner Civic Building Design Award

"Dolphin Watch" Cruises – Shoalhaven Building Design Awards – Best Commercial Building

19
90

2000

Humphrey's Residence Shoalhaven building Design Award

2002

Ross Residence Beach Commendation - NSW RAIA Country Division

Gilbert Residence Winner - Shoalhaven Building Design Awards Alterations & Additions

C + M Masonry Winner 2002 Shoalhaven Building Design Awards Industrial

2003

Addecco Office Fit-Out Wollongong – Architectural Design Awards Interior Design/Fit-out

2004

Rimanic Luxury Units – RAIA NSW Multi-Unit Award

Rimanic Luxury Units – Shoalhaven Council Design Award

Riles Residence - RAIA NSW Residential Award & Shoalhaven Council

Council Design Award

2005

Wollongong Kirsten / Bolt Units – RAIA Country Division Award Best Multi Residential

Cutbush Residence - RAIA Country Division Award Best Use of Timber

20
00

2006

Burge Residence - Shoalhaven Building Design Award Alterations & Additions

Mariner Luxury Unit Development – Wollongong City Council Architectural Design Awards Commendation Multi-Storey Mixed Use Developments / Residential Apartment Buildings

Bevans Real Estate Corimal – Wollongong City Council Architectural Design Awards Commendation for Multi-Storey Mixed Use Developments /Apartment Buildings

Kirsten / Bolt Dual Occupancy – Wollongong City Council Architectural Design Awards Commendation – New Dual Occupancies, Villas and Townhouses

Burge Residence - Commendation NSW RAIA Country Division

2007

Huainan Wetland & Ecological Centre - 1000 ha wetland rehabilitation & protection - China

2008

Conjola Lakeside Van Park – Winner Shoalhaven Building Design Awards

China Cultural Symbolic City - protection and interpretation of heritage landscape & villages to define Chinese History - Shandong, China

2009

Eco City Changxing – Best Concept Design for the China Human Habitat Model 2009, awarded by the National Architecture Institute of China

20
10

2010

West Tai Lake Science & Education Ecological City 60 km2, ESD Communities & Urban Agriculture - Changxing, China

2011

Xigong Mountain Cultural Precinct & Heritage Landscape - Zaozhuang, China

2012

Xigong Mountain Cultural Precinct & Heritage Landscape - Zaozhuang , China

Eco City Changxing – Highly Commended for Urban Regeneration, awarded by WAN

MOSS International Green Awards - Sustainability Summit – Paper

Xigong Mountain Cultural Precinct China – International Urban Design Competition

2013

Jinshui Wan Housing, Xuecheng – shortlisted for the International WAN Residential Awards

6th International Urban Design Conference – Sustainable Urbanism Paper

Green Awards Presentation – Sustainable City Development Paper

2014

Jade Emperor Temple – Xuecheng, finalist in the International WAN Civic Awards

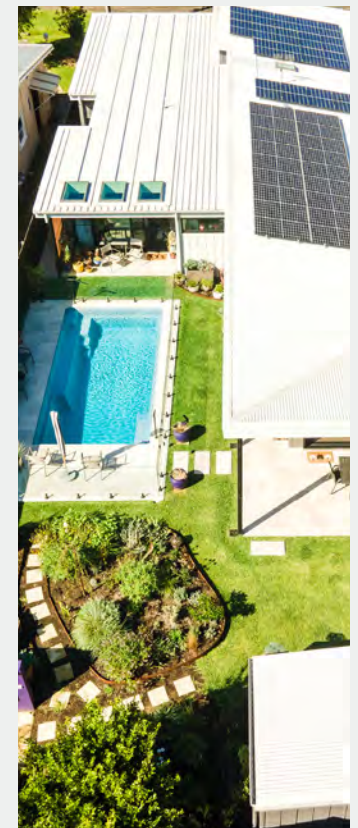
2017

Central Gardens - The Urban Development Institute of Australia's (UDIA) Awards for Excellence

20
20

2020

Lloyds Residence - Kiama Heights NSW Country Division Architecture Awards Commendation - Residential Architecture





BHI Architects Pty Ltd

Suite 10, level 3,
77 Dunning Avenue
Sydney 02 9313 7800

Unit 4, 125 Terralong Street
Kiama 02 9313 7800

Nominated Architect

Mark Hitchcock 4763
ABN 61 154 194 064

bhia.com.au